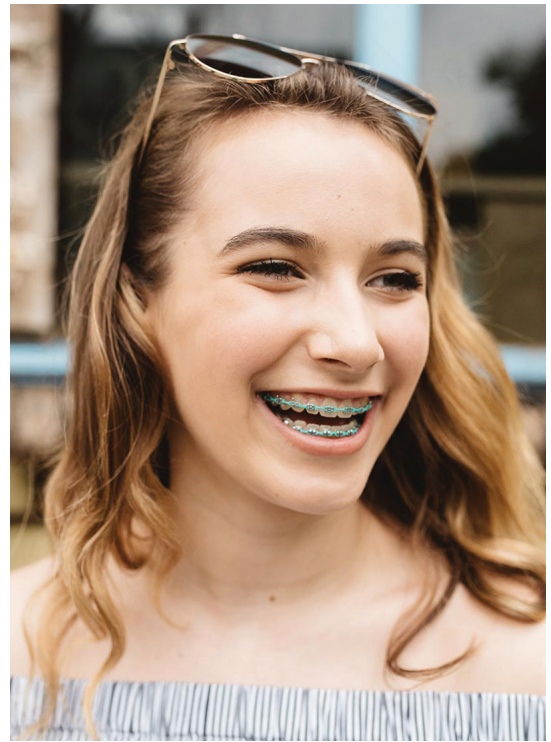


Value-Added Orthodontic Discount Program

Delta Dental of Idaho members no longer have to 'brace' for the cost of orthodontic care. Delta Dental's value-added Orthodontic Discount Program provides Idaho members and their eligible dependents a discounted fee for adult and child orthodontia if they obtain care from a Delta Dental of Idaho Discount Program orthodontist.



Number of Treatment Months	Fee Schedule Based on Length of Treatment
12 to 17 months	\$4,050
18 to 24 months	\$4,450
25+ months	\$4,850

Who is Eligible?

All Idaho members and their eligible dependents enrolled in a Delta Dental of Idaho dental plan that does not include an orthodontic benefit are eligible for Delta Dental's value-added Orthodontic Discount Program.

How Does the Discount Program Work?

Delta Dental members will experience substantial savings because Idaho orthodontists in the Orthodontic Discount Program agree to discounted fees. Members simply call and schedule a visit with a Delta Dental of Idaho Discount Program orthodontist and present their Delta Dental of Idaho ID card at the time of their appointment. The discount amount is based on the length of treatment. Members will know their total out-of-pocket costs prior to the beginning of treatment, so there will be no surprises! See the fee schedule above for details.

Is There a Cost for this Orthodontic Program?

No. Delta Dental of Idaho's Orthodontic Discount Program is a value-added service and is not insurance.

Please see the back of this flyer for a list of orthodontists in the Discount Program.

For more information, please call (208) 489-3580 or email: CustomerService@deltadentalid.com

Provider List

Value-Added Orthodontic Discount Program

Delta Dental of Idaho members and their eligible dependents can receive a discounted fee on adult and child orthodontia treatment. Members simply call and schedule a visit with an orthodontist from the list below and present their Delta Dental of Idaho ID card at the time of their appointment. *This is a value-added service and is not insurance.*

Providers periodically change, so please visit go.deltadentalid.com/orthodontic-discount for the latest provider list.

Aberdeen

Shane Schvaneveldt, DDS
(208) 734-4600

Ammon

C. Jared Randall, DDS, MS
(208) 523-3380

Arco

C. Jared Randall, DDS, MS
(208) 527-3472

Blackfoot

Michael Summers, DDS, MS
(208) 232-0464

Boise

Scott Alexander, DMD
(208) 331-5080
(208) 377-0252

Steven Gilman, DMD
(208) 375-5012

Jacob R. Jarvis, DMD, MS
(208) 383-0100

John Kalange, DDS
(208) 342-0212
(208) 342-0678

(two Boise locations)

Laura Lineberry, DDS, MS
(208) 658-9470

Marcus Lowry, DDS
(208) 377-0410

Jon Miler, DDS, MS
(208) 323-4800

John Slattery, DDS, MS
(208) 433-1122

Sam Smith, DMD, MS
(208) 321-7006

Brendon Swenson, DDS
(208) 649-5721

Terrell Tingey, DDS,
(208) 375-0631

Travis Tingey, DDS, MS
(208) 375-0631

Christopher Kelson, DMD
(208) 378-1300

Gregory Guymon, DDS
(208) 898-0000

Burley

Shane Schvaneveldt, DDS
(208) 734-4600

Caldwell

Brendon Swenson, DDS
(208) 649-5721

Eagle

Jacob R. Jarvis, DMD, MS
(208) 383-0100

Sam Smith, DMD, MS
(208) 321-7006

Emmett

Kelsey Peterson, DMD
(208) 365-6800

John Slattery, DDS, MS
(208) 433-1122

Fruitland

Jason R Howell, DMD, MS
(208) 452-4444

Clark Knowlton DDS
(208) 452-4444

Garden City

Clark Knowlton, DDS
(208) 388-1111

Idaho Falls

Dwight D. Baker, DDS
(208) 524-0644

Jordan Hillam, DDS
(208) 524-1800

Matthew J Elison DDS
(208)522-9600

Phillip David Lowder, DDS
(208) 524-1404

Ryan L Wood, DDS,
(208)522-9600

Bret E. Mooso, DDS, MS
(208) 522-4552

Anthony Mongillo, DMD
(208) 524-1404

Joshua Murphy, DMD
(208) 522-4552

Andrew Higham, DDS
(208) 777-1010

Jerome

Shane Schvaneveldt, DDS
(208) 734-4600

Lewiston

Brendon Swenson, DDS
(208) 746-0479

McCall

John Slattery, DDS, MS
(208) 433-1122

Meridian

Brandon Fowler, DDS
(208) 893-5440

(208) 895-8555

(208) 887-1053
(in three locations)

Michael L. Gold, DMD
(208) 376-2422

Greg Guymon, DDS
(208) 898-0000

Jason R. Howell, DMD, MS
(208) 893-5151

Jacob Jarvis, DMD, MS
(208) 585-9200

Marcus Lowry, DDS
(208) 855-5045

John Slattery, DDS, MS
(208) 433-1122

Terrell Tingey, DDS,
(208) 375-0631

Travis Tingey, DDS, MS
(208) 375-0631

Clark Knowlton, DDS
(208) 999-4999

Montpelier

Jeffrey W. Johnson, DDS
(208) 529-3500

Mountain Home

Steven Gilman, DMD
(208) 587-3010

Laura Lineberry, DDS, MS
(208) 587-4422

Nampa

Marcus Lowry, DDS
(208) 461-5459

Patrick Niland, DDS, MS
(208) 467-5259

John Slattery, DDS, MS
(208) 433-1122

Brendon Swenson, DDS
(208) 649-5721

Clark Knowlton, DDS
(208) 468-9191

Payette

Jason R. Howell, DMD, MS
(208) 893-5151

Pocatello

Rufus Van Dyke, DDS
(208) 237-3330

Michael Summers, DDS,
MS (208) 232-0464

Tyler Leavitt, DDS
(208) 237-3330

Post Falls

Patrick Rickheim, DDS
(208) 777-1010

Jeremy Haines, DMD, MS
(208) 777-0500

Rexburg

Andrew W. Summers,
DDS (208) 356-3621

Matthew J Elison DDS
(208)356-3300

Ryan L Wood DDS
(208)356-3300

Rigby

Phillip David Lowder, DDS
(208) 745-7407

Ryan L Wood, DDS
(208) 497-3300

Matthew J Elison, DDS
(208) 497-3300

Joshua Murphy, DMD
(208) 497-0826

Rupert

Shane Schvaneveldt, DDS
(208) 734-4600

Salmon

Phillip David Lowder, DDS
(208) 524-1404

Anthony Mongillo DMD
(208)524-1404

Shoshone

Shane Schvaneveldt, DDS
(208) 734-4600

Star

Clark Knowlton DDS
(208)789-7616

Sugar City

Phillip David Lowder, DDS
(208) 745-7407

Twin Falls

Shane Schvaneveldt, DDS
(208) 734-4600

If your orthodontist is not currently a participating provider in the Discount Orthodontic Program, please have them contact Delta Dental of Idaho at (208) 489-3580 or customerservice@deltadentalid.com. Delta Dental of Idaho complies with applicable Federal civil rights laws and does not discriminate on the basis of race, color, national origin, age, disability, or sex. ATENCIÓN: si habla español, tiene a su disposición servicios gratuitos de asistencia lingüística. Llame al 1-(800) 356-7586. 注意:如果您使用繁體中文,您可以免費獲得語言援助服務。請致電1-(800) 356-7586.